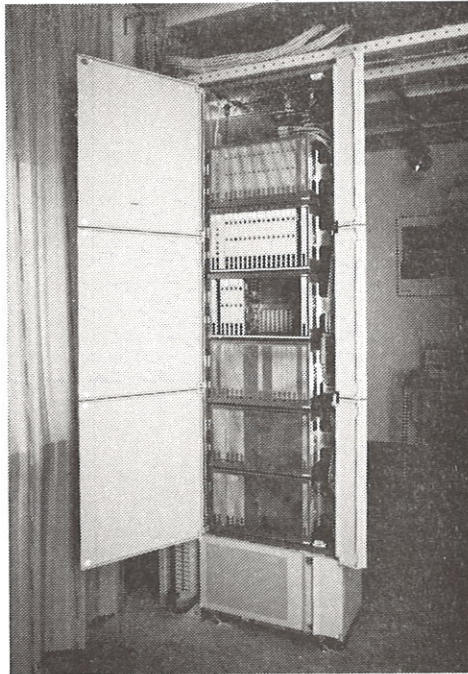


If you need photos or overheads for  
information or publicity contact;  
Phone: 46 8 531 87 093, 46 8 714 07 55  
Fax: 46 8 644 61 16

# ETNA

## Photo Catalogue 9311



Nr: F205/1

**AXD 1/0 96-Port Rack**

Open

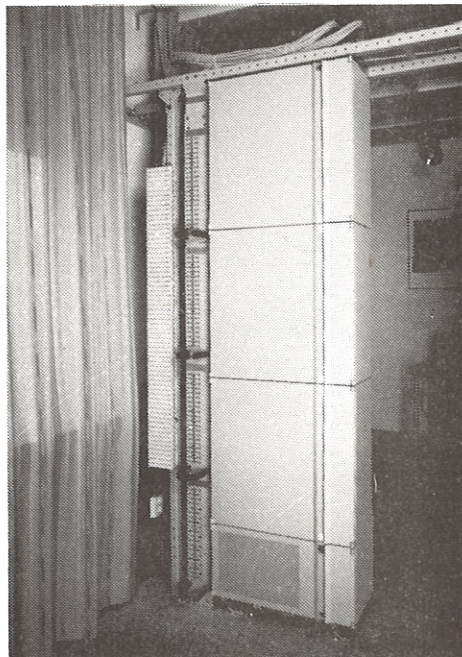
(OH: EN/LZD 109205/17 R1)

---

---

---

---



Nr: F205/2

**AXD 1/0 96-Port Rack**

Closed

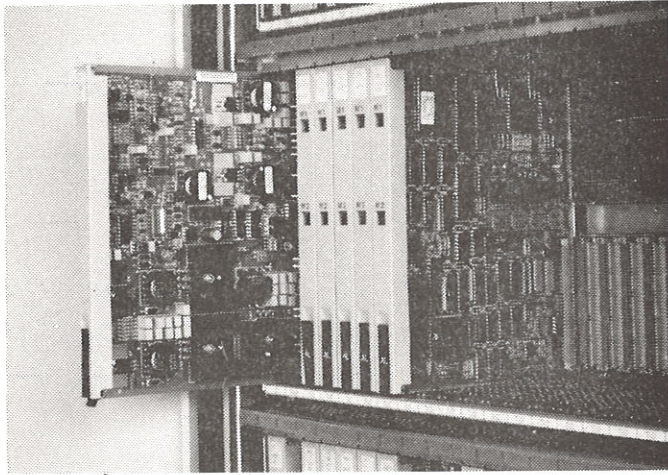
(OH: EN/LZD 109205/17 R1)

---

---

---

---



Nr: F205/3

**Port Equipment Shelf**

(OH: EN/LZD 109205/18 R1)

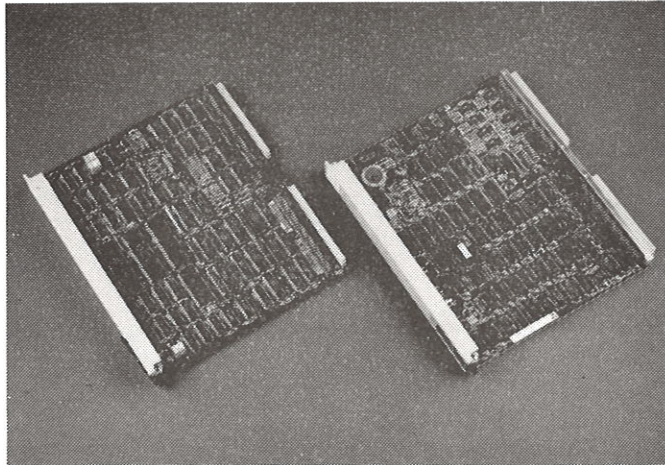
---

---

---

---

---



Nr: F205/4

**AXD 1/0 Units**

(OH: EN/LZD 109205/19 R1)

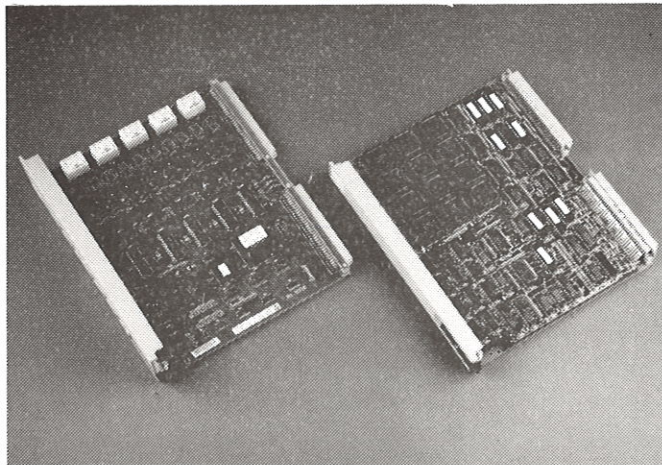
---

---

---

---

---



Nr: F205/5

**AXD 1/0 Units**

(OH: EN/LZD 109205/20 R1)

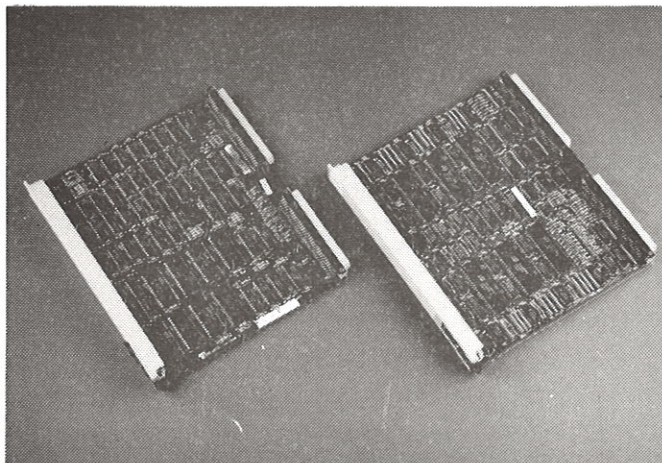
---

---

---

---

---



Nr: F205/6

**AXD 1/0 Units**

(OH: EN/LZD 109205/21 R1)

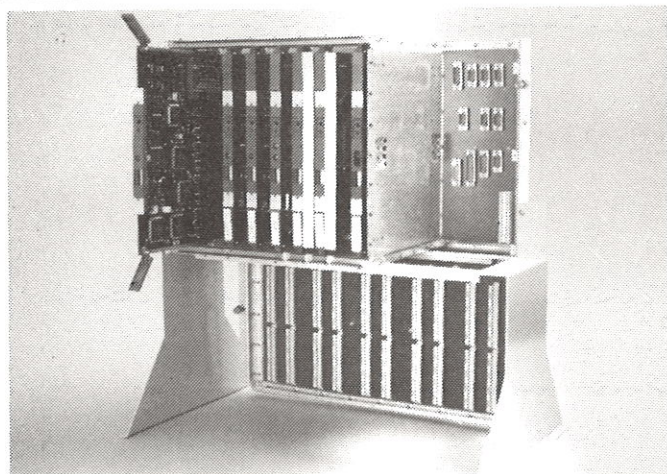
---

---

---

---

---



Nr: F206/1

**Subrack**

(OH: EN/LZD 109206/2 R1)

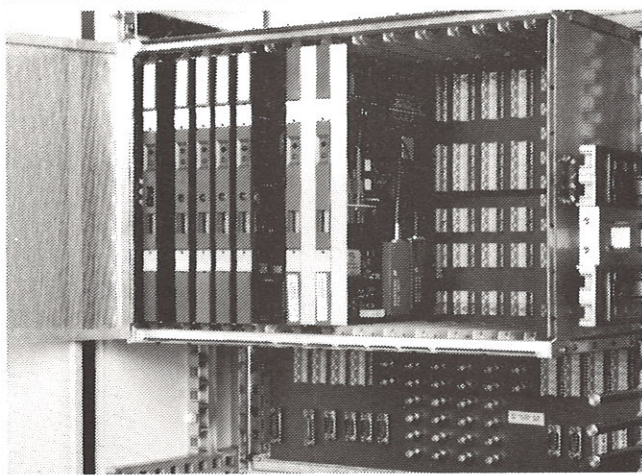
---

---

---

---

---



Nr: F206/2

**AXD 155 Add-Drop Multiplexer**

(OH: EN/LZD 109206/4 R1)

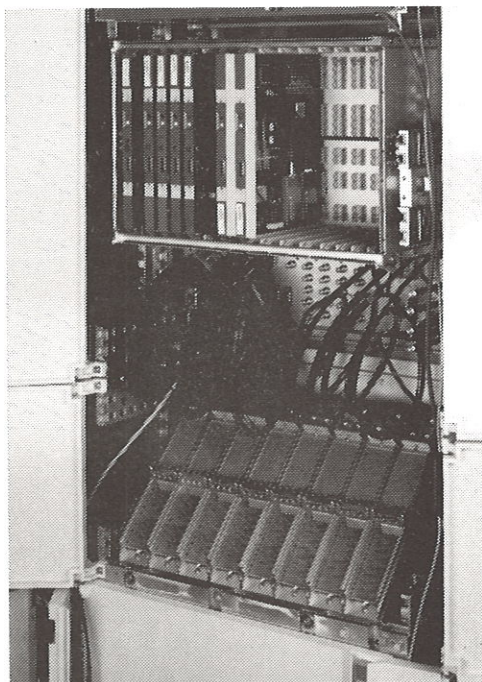
---

---

---

---

---



Nr: F206/3

**Add-Drop Multiplexer**

(Tysk mekanik)

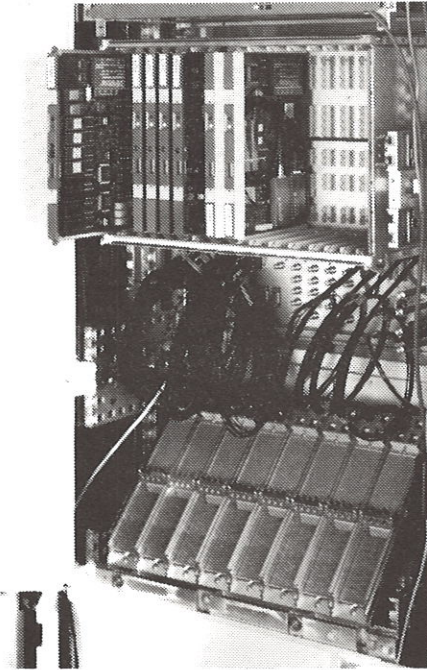
---

---

---

---

---



Nr: F206/4

**Add-Drop Multiplexer**  
(Tysk mekanik)

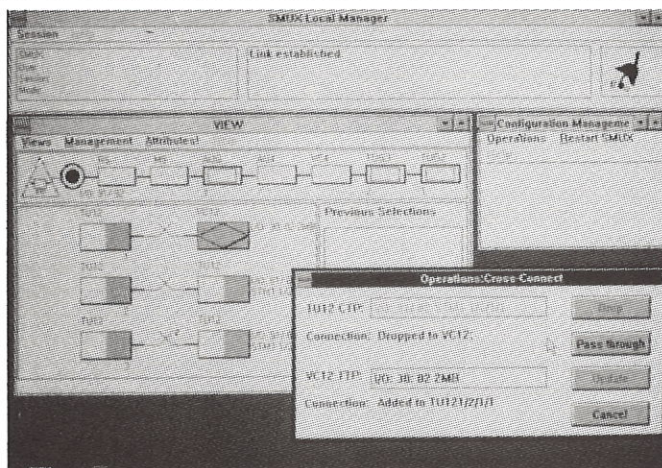
---

---

---

---

---



Nr: F206/5

**AXD155 Screen Display**  
(OH: EN/LZD 109206/3 R1)

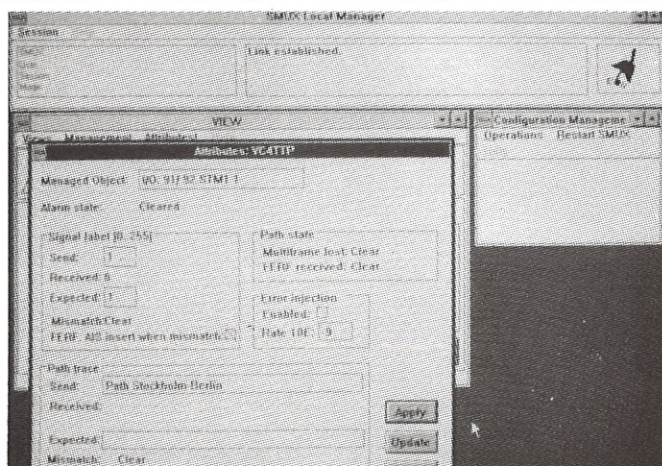
---

---

---

---

---



Nr: F206/6

**AXD155 Screen Display**  
(OH: EN/LZD 109206/5 R1)

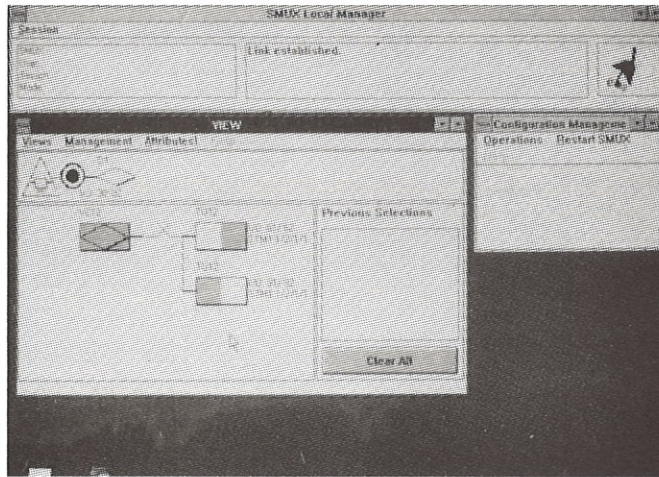
---

---

---

---

---



Nr: F206/7

### AXD 155 Screen Display

(OH: EN/LZD 109206/6 R1)

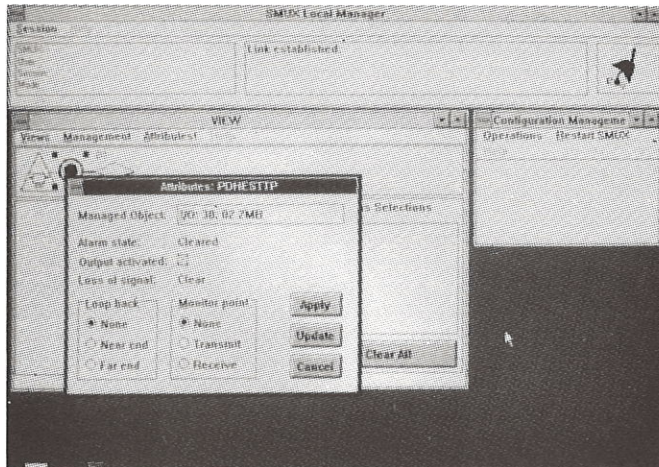
---

---

---

---

---



Nr: F206/8

### AXD 155 Screen Display

(OH: EN/LZD 109206/7 R1)

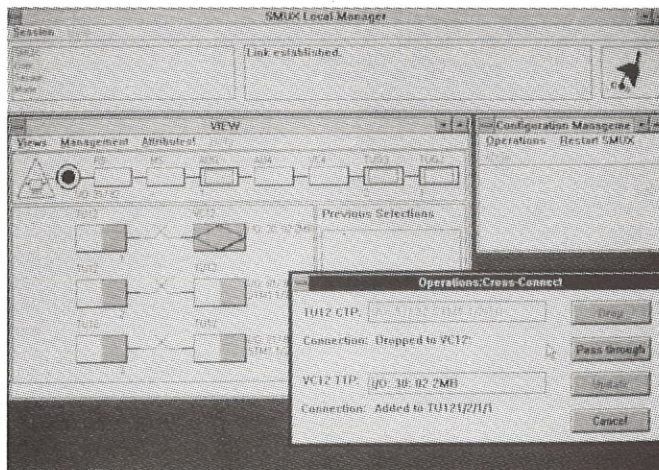
---

---

---

---

---



Nr: F206/9

### Screen Display

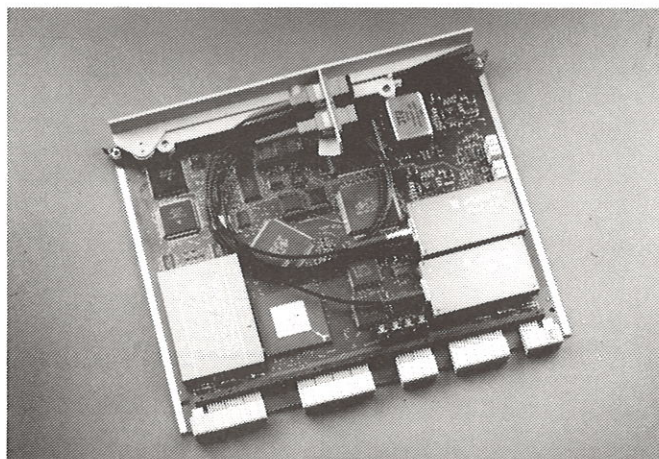
---

---

---

---

---



Nr: F206/10

### TAU STM-1 Optical

(OH: EN/LZD 109206/1 R1)

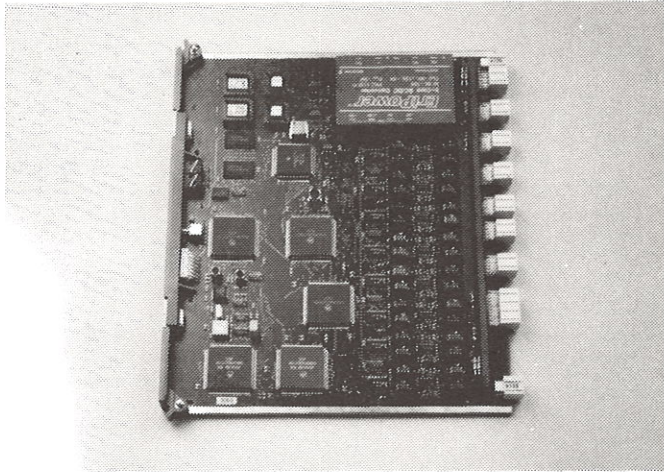
---

---

---

---

---



Nr: F206/11

**Terminating Access Unit**

**TAU 16x2**

(Blå bakgrund)

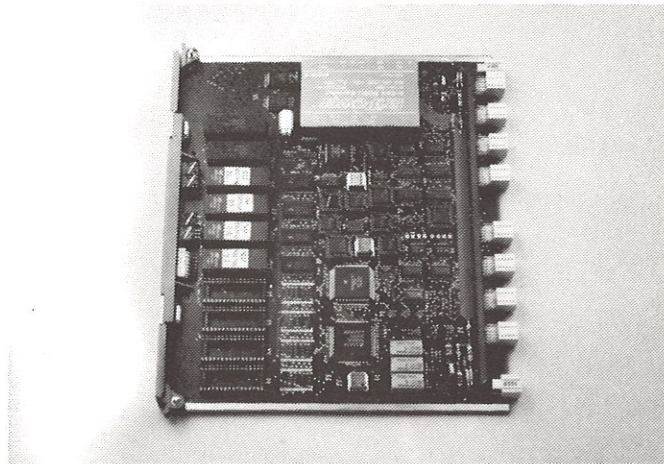
---

---

---

---

---



Nr: F206/12

**TAU STM-1 e**

(Blå bakgrund)

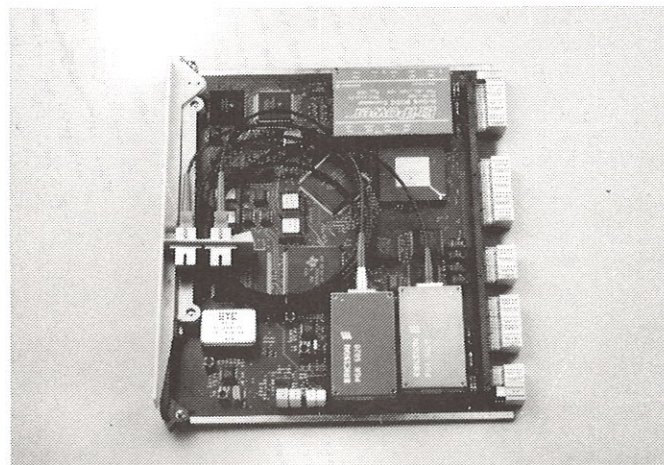
---

---

---

---

---



Nr: F206/13

**TAU STM-1 Optical**

(Blå bakgrund)

---

---

---

---

---



Nr: F207/1

**AXD 4/1 Integration Test**

(OH: EN/LZD 109207/1 R1)

---

---

---

---

---



Nr: F207/2

**Integration Test**

---

---

---

---

---



Nr: F207/3

**Integration Test**

---

---

---

---

---



Nr: F207/4

**Integration Test**

---

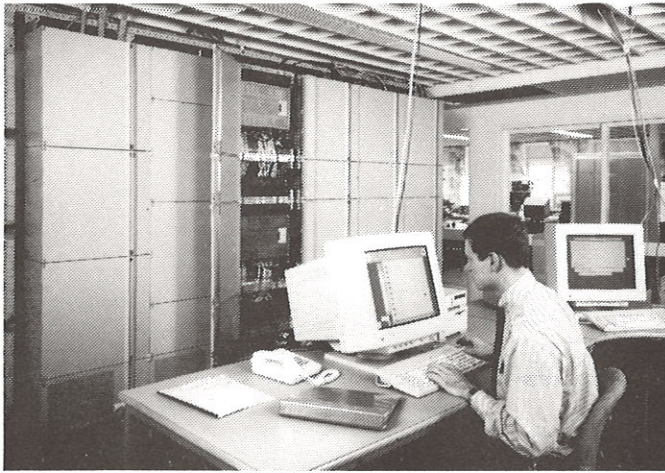
---

---

---

---





Nr: F207/5

**Integration Test**

---

---

---

---

---



Nr: F207/6

**Integration Test**

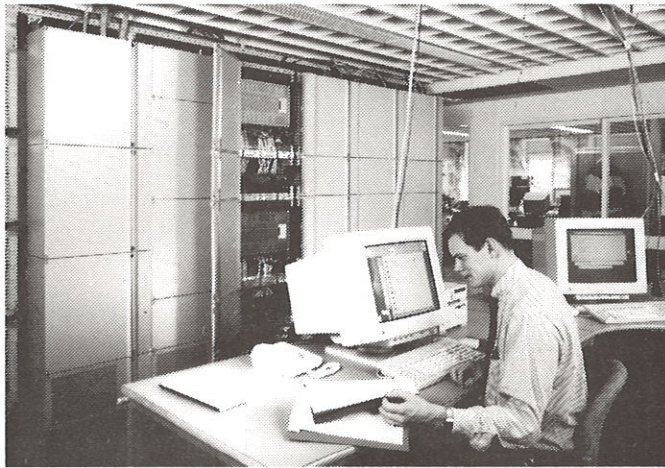
---

---

---

---

---



Nr: F207/7

**Integration Test**

---

---

---

---

---



Nr: F207/8

**Integration Test**

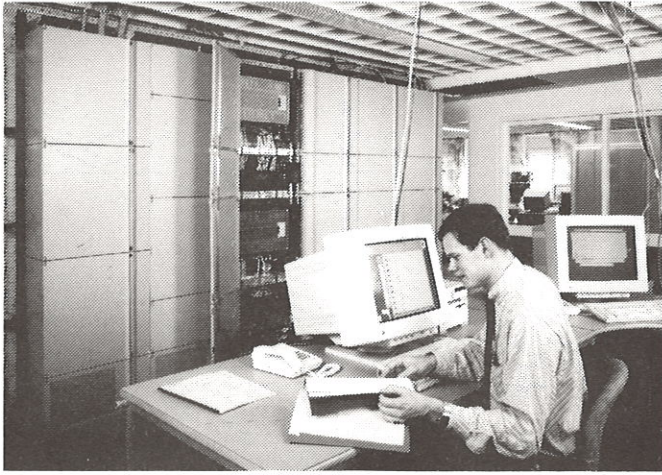
---

---

---

---

---



Nr: F207/9

**Integration Test**

---

---

---

---

---



Nr: F207/10

**Integration Test**

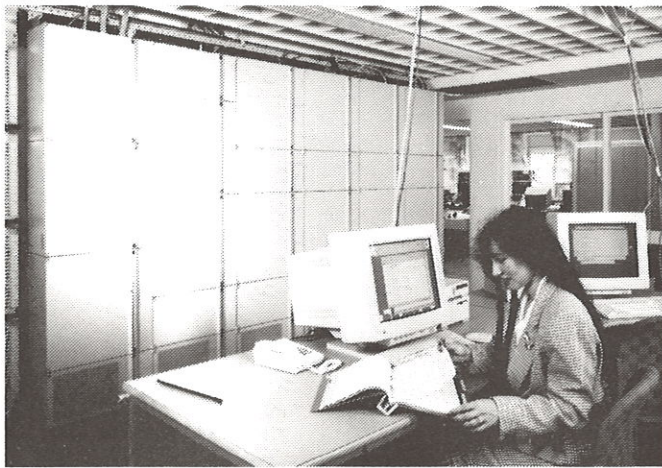
---

---

---

---

---



Nr: F207/11

**Integration Test**

---

---

---

---

---



Nr: F207/12

**Integration Test**

---

---

---

---

---



Nr: F207/13

**Integration Test**

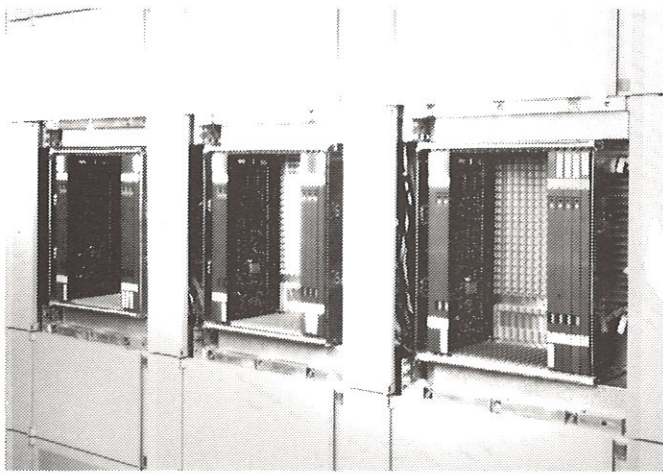
---

---

---

---

---



Nr: F207/14

**AXD 4/1 Switch Planes A-B-C**

(OH: EN/LZD 109207/2 R1)

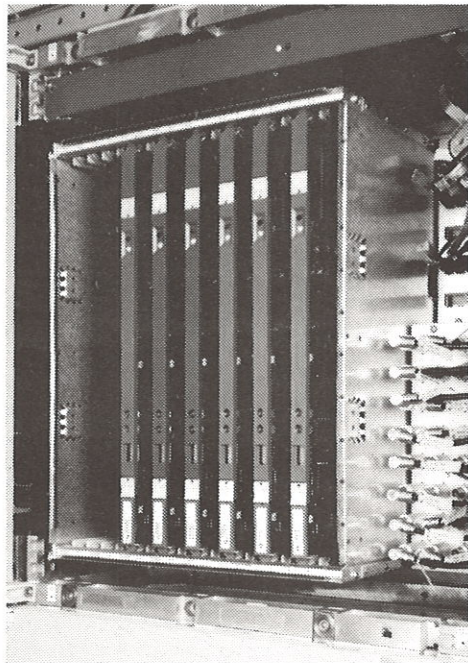
---

---

---

---

---



Nr: F207/15

**AXD 4/1 SNI-4**

Subrack for 140 Mbit/s or 155 Mbit/s

Front view

(OH: EN/LZD 109207/3 R1)

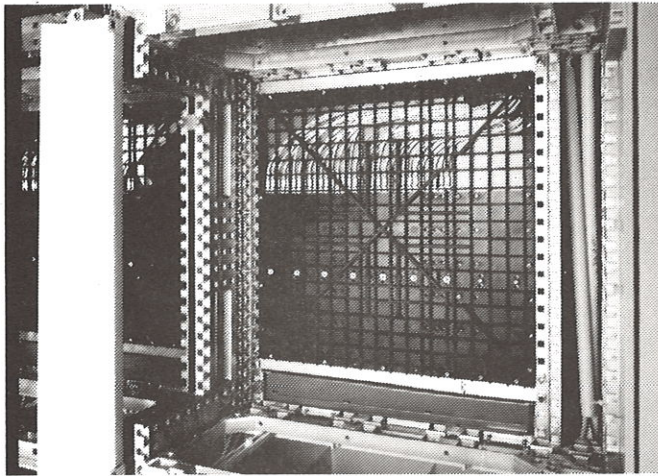
---

---

---

---

---



Nr: F207/16

**AXD 4/1 SNI-4**

Subrack for 140 Mbit/s or 155 Mbit/s

Rear view

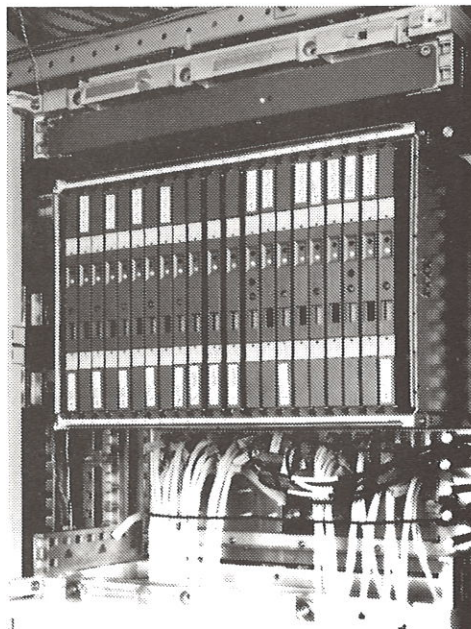
(OH: EN/LZD 109207/3 R1)

---

---

---

---



Nr: F207/17

**AXD 4/1 SNI-3**

Subrack for 2 Mbit/s or 34 Mbit/s

Front view

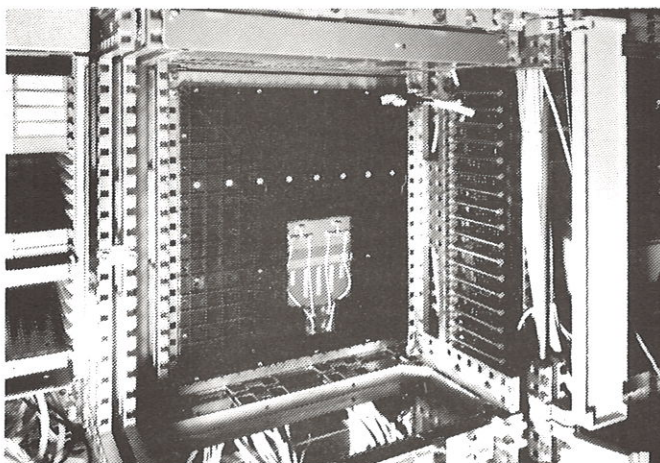
(OH: EN/LZD 109207/4 R1)

---

---

---

---



Nr: F207/18

**AXD 4/1 SNI-3**

Subrack for 2 Mbit/s or 34 Mbit/s

Rear view

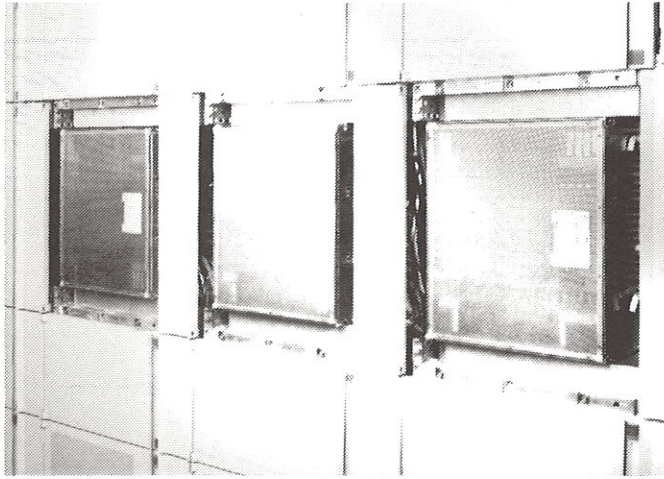
(OH: EN/LZD 109207/4 R1)

---

---

---

---



Nr: F207/19

**AXD 4/1 Switch Planes A-B-C**

(OH: EN/LZD 109207/5 R1)

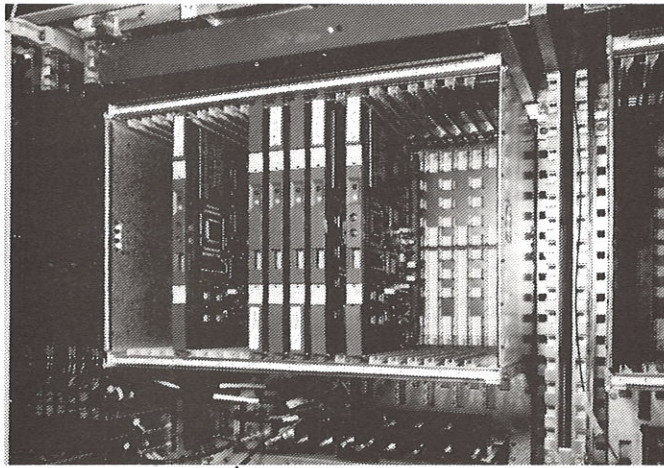
---

---

---

---

---



Nr: F207/20

**AXD 4/1 SNI-3 with CP-access**

(OH: EN/LZD 109207/6 R1)

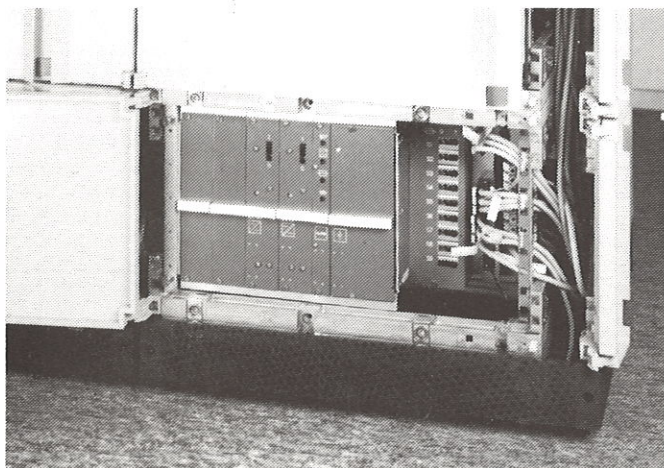
---

---

---

---

---



Nr: F207/21

**AXD 4/1 Flexnode**

**Fuses and Power Supply**

(OH: EN/LZD 109207/7 R1)

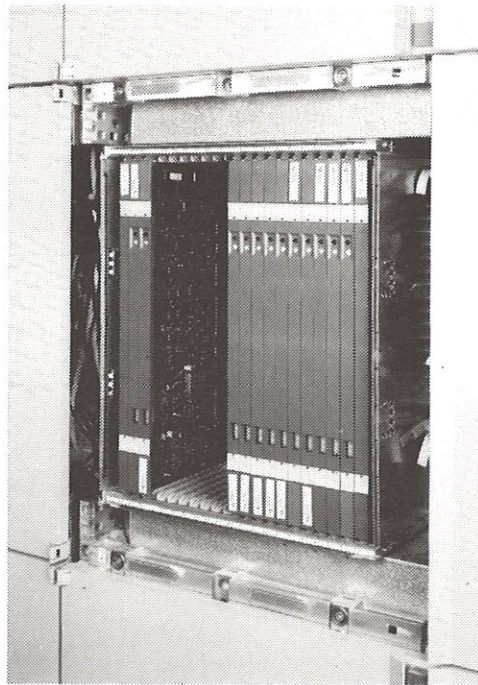
---

---

---

---

---



Nr: F207/22

**AXD 4/1 Switch Plane**

**Front view**

(OH: EN/LZD 109207/8 R1)

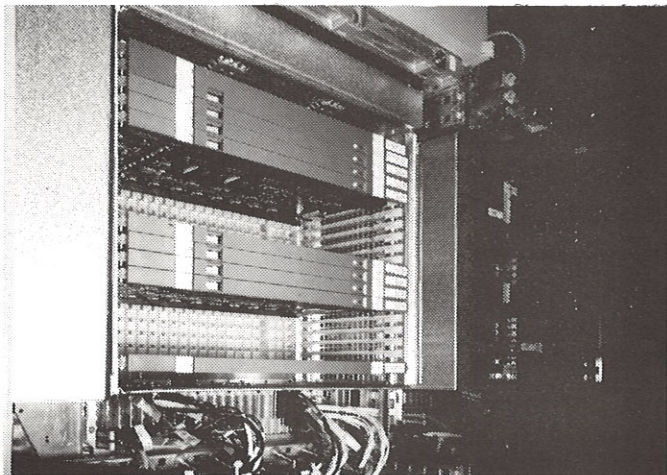
---

---

---

---

---



Nr: F207/23

**AXD 4/1 Switch Plane**

**Rear view**

(OH: EN/LZD 109207/8 R1)

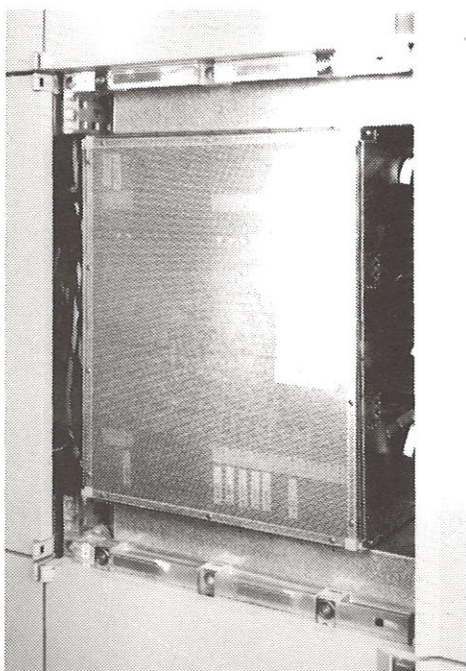
---

---

---

---

---



Nr: F207/24

**Switch Plane**

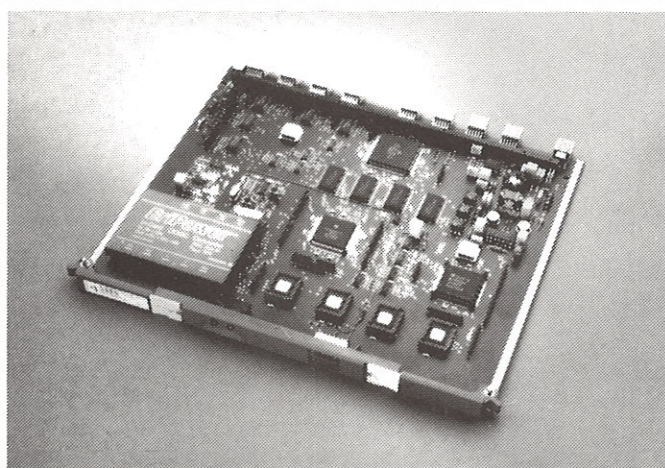
---

---

---

---

---



Nr: F207/25

**Control Terminal Unit CTU**

(OH: EN/LZD 109207/9 R1)

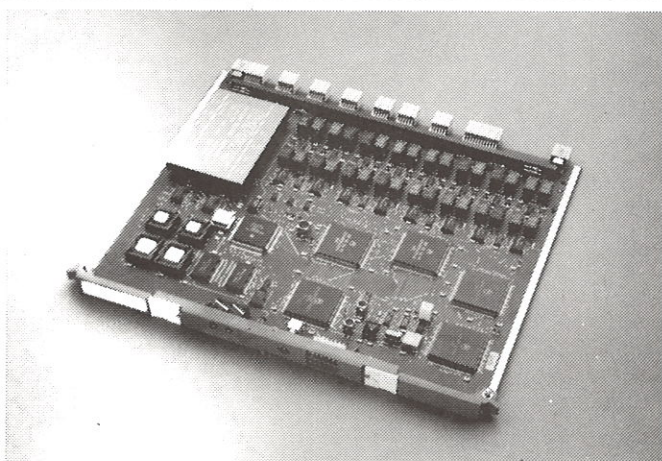
---

---

---

---

---



Nr: F207/26

**Terminating Access Unit**

**TAU 16x2**

(OH: EN/LZD 109207/10 R1)

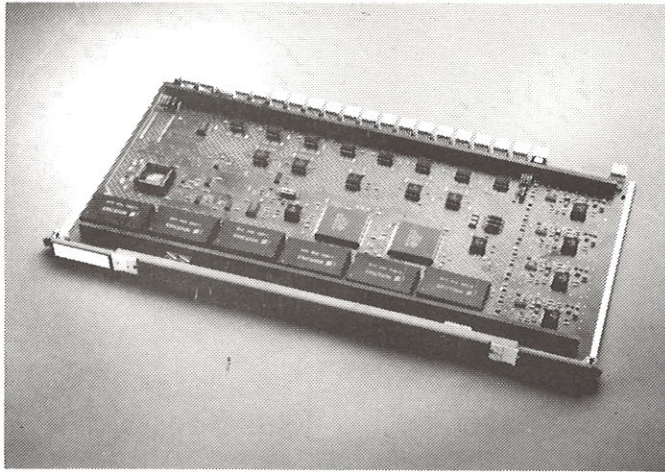
---

---

---

---

---



Nr: F207/27

**Distribution Matrix Board**

(OH: EN/LZD 109207/11 R1)

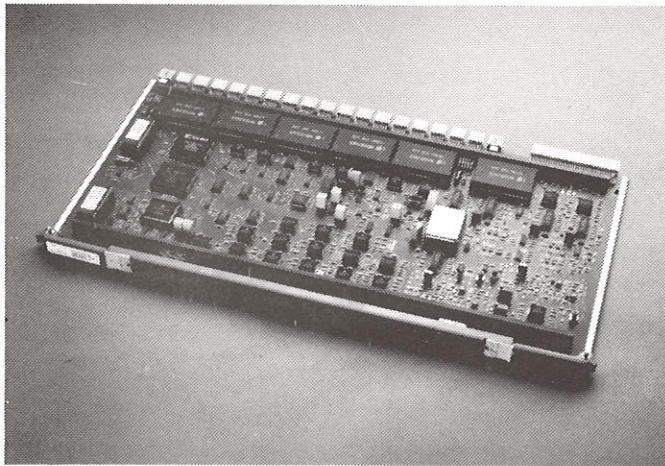
---

---

---

---

---



Nr: F207/28

**Clock and Synchronization Board**

(OH: EN/LZD 109207/12 R1)

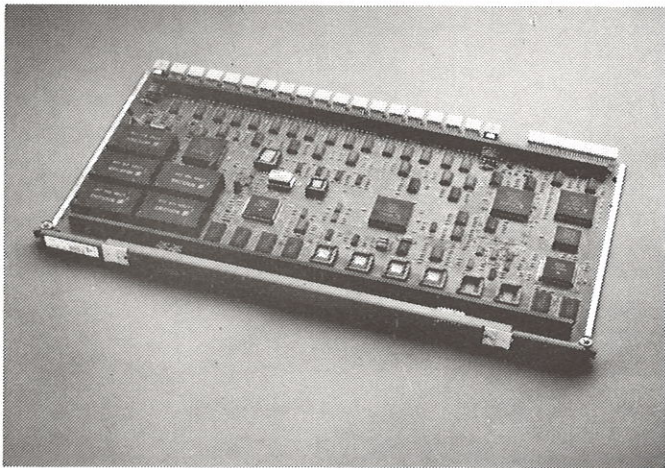
---

---

---

---

---



Nr: F207/29

**Vertical Power Board**

(OH: EN/LZD 109207/13 R1)

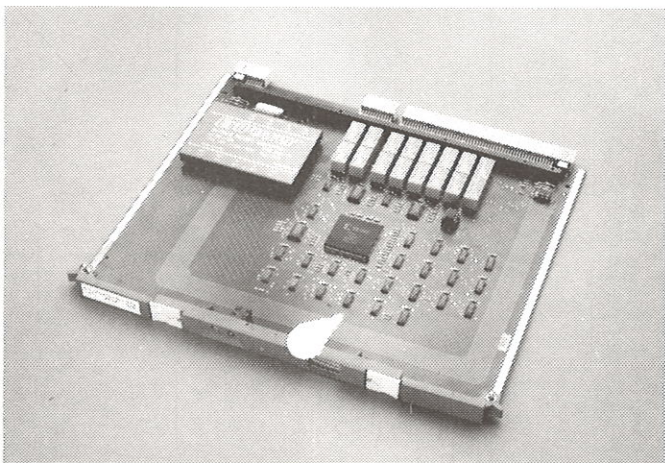
---

---

---

---

---



Nr: F207/30

**Protection Switch Unit**

(OH: EN/LZD 109207/14 R1)

---

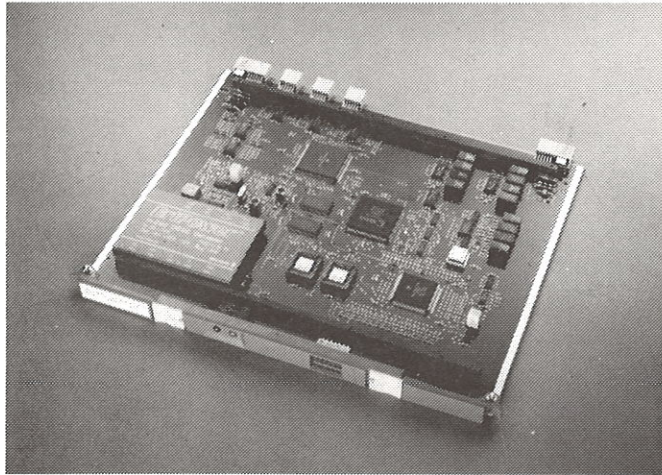
---

---

---

---





Nr: F207/31

**External Synchronization Unit**

(OH: EN/LZD 109207/15 R1)

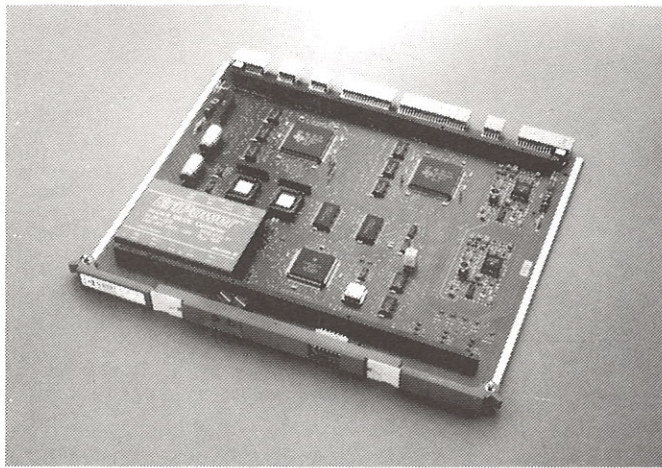
---

---

---

---

---



Nr: F207/32

**Terminal Connection Unit**

**TCU**

(OH: EN/LZD 109207/16 R1)

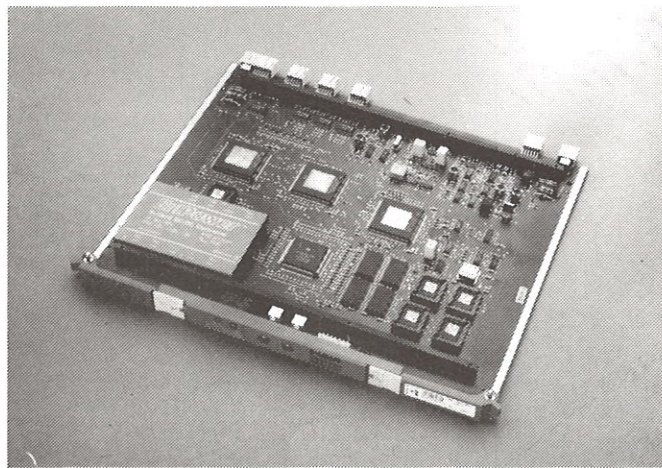
---

---

---

---

---



Nr: F207/33

**Terminating Access**

**Unit TU 34**

(OH: EN/LZD 109207/17 R1)

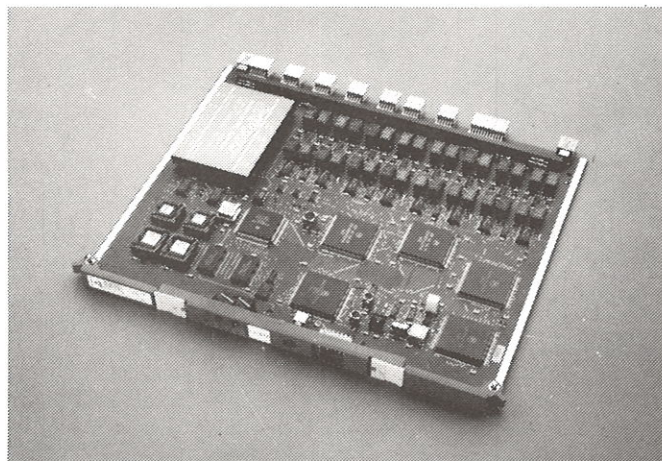
---

---

---

---

---



Nr: F207/34

**Terminating Access Unit**

**TAU 16x2**

(OH: EN/LZD 109207/18 R1)

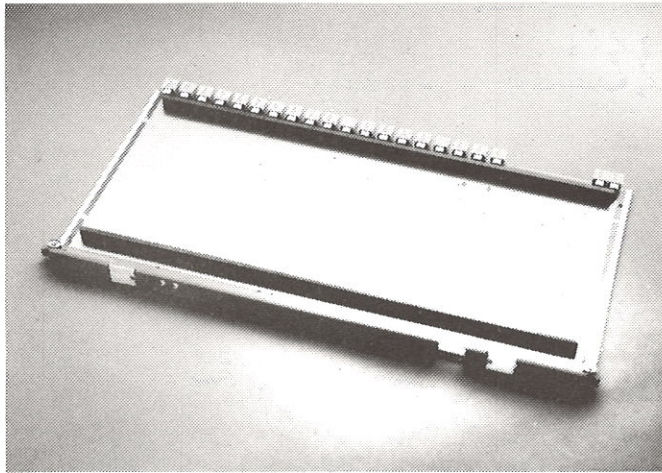
---

---

---

---

---



Nr: F207/35

**Horizontal Power Board**

(OH: EN/LZD 109207/19 R1)

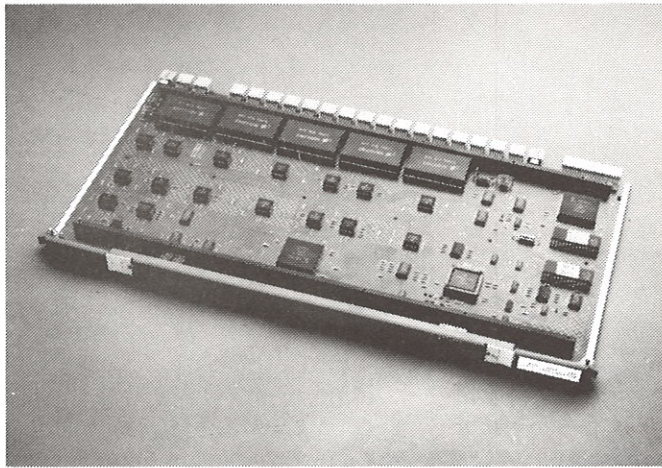
---

---

---

---

---



Nr: F207/36

**Horizontal Control Board**

(OH: EN/LZD 109207/20 R1)

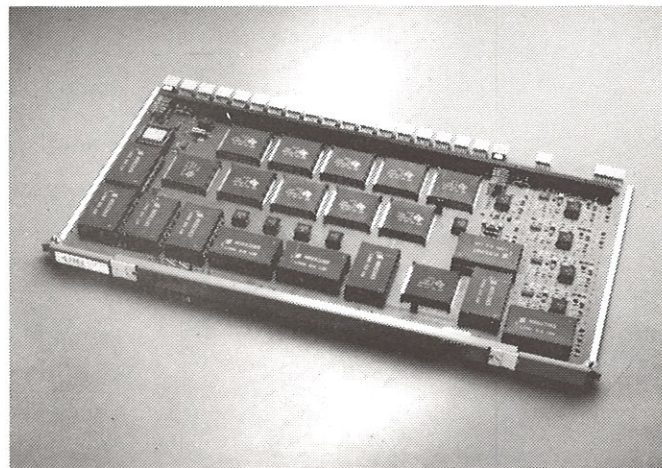
---

---

---

---

---



Nr: F207/37

**Swich Matrix Board**

(OH: EN/LZD 109207/21 R1)

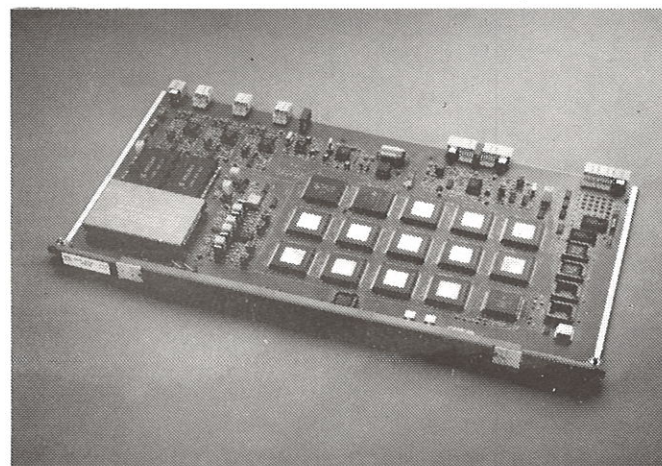
---

---

---

---

---



Nr: F207/38

**Terminating Access Unit**

**TAU 140**

(OH: EN/LZD 109207/22 R1)

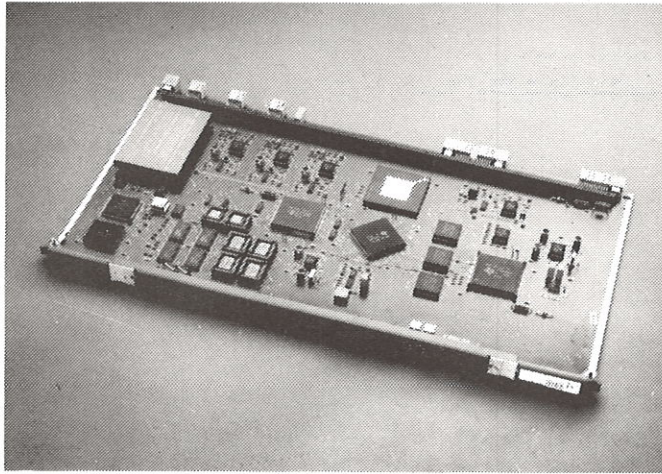
---

---

---

---

---



Nr: F207/39

**Terminating Access Unit**

**4xSTM1e**

(OH: EN/LZD 109207/23 R1)

---



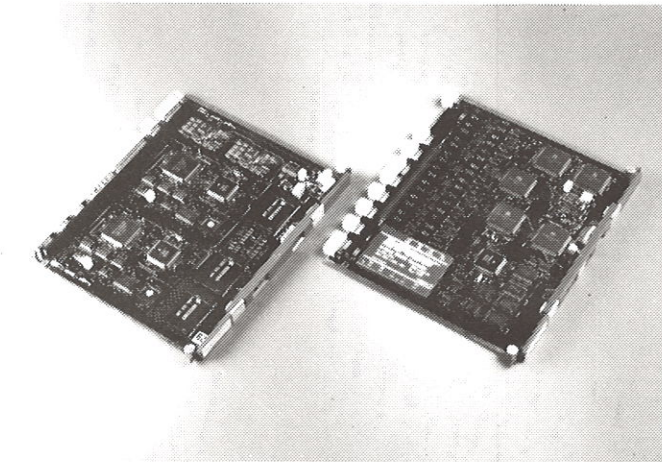
---



---



---



Nr: F207/40

**Units:**

**Left: SNI-3**

**Right: TAU 16x2**

---



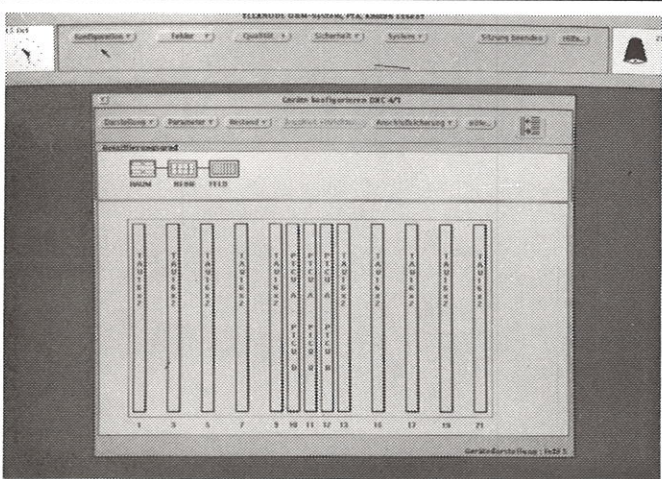
---



---



---



Nr: F207/41

**AXD 4/1 Flexnode**

**Screen Display SNI-3**

(OH: EN/LZD 109207/24 R1)

---



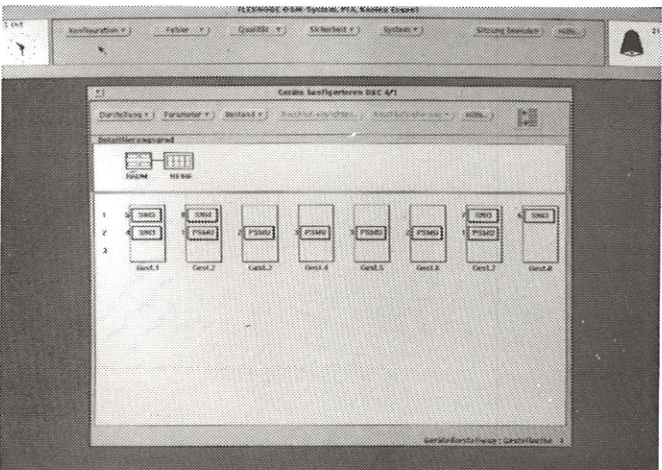
---



---



---



Nr: F207/42

**AXD 4/1 Flexnode**

**Screen Display Cabinet Layouts**

(OH: EN/LZD 109207/25 R1)

---



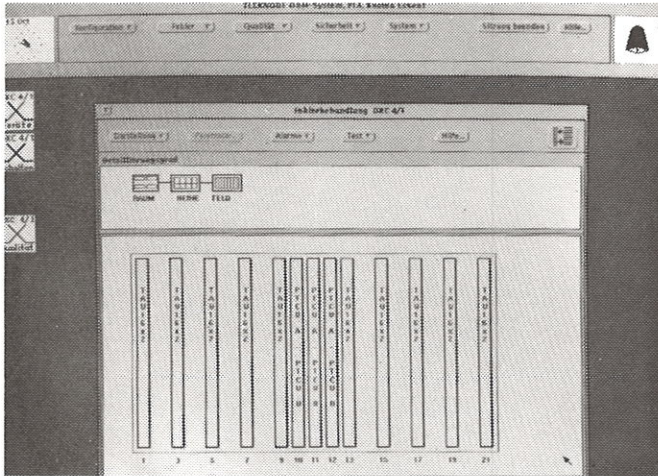
---



---



---



Nr: F207/43

### Flexnode

Screen Display SNI-3 Alarm

(OH: EN/LZD 109207/26 R1)

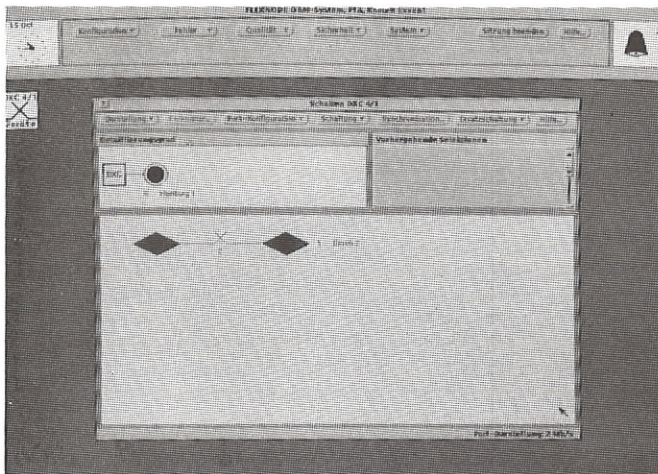
---

---

---

---

---



Nr: F207/44

### Flexnode

Screen Display 2 Mbit/s Cross connection

(OH: EN/LZD 109207/27 R1)

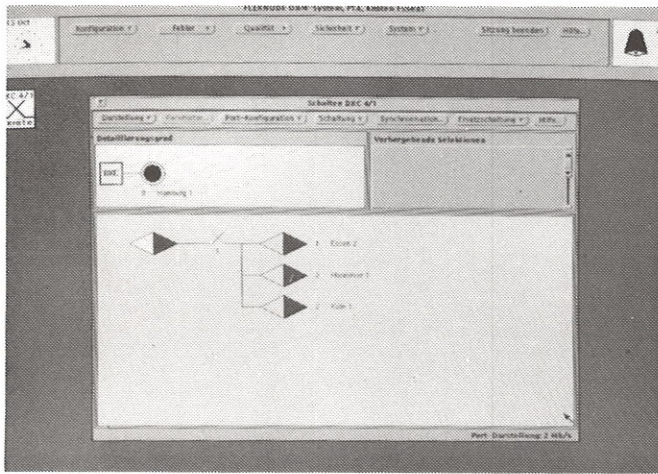
---

---

---

---

---



Nr: F207/45

### AXD 4/1 Flexnode

Screen Display Broadcast

(OH: EN/LZD 109207/28 R1)

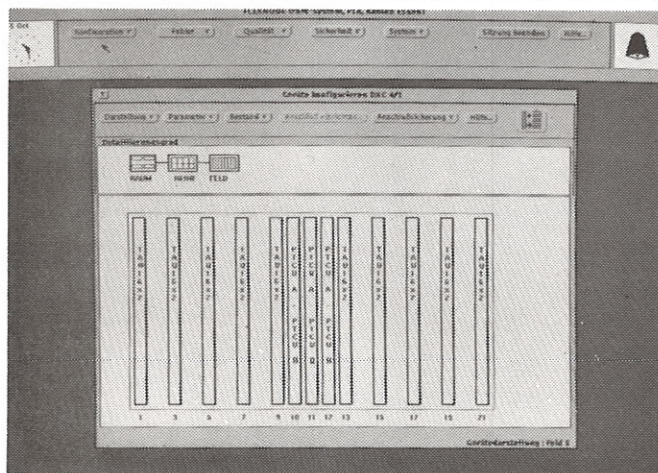
---

---

---

---

---



Nr: F207/46

### Screen Display



Nr: F209/1

**Integration Test**

---

---

---

---

---



Nr: F209/2

**Integration Test**

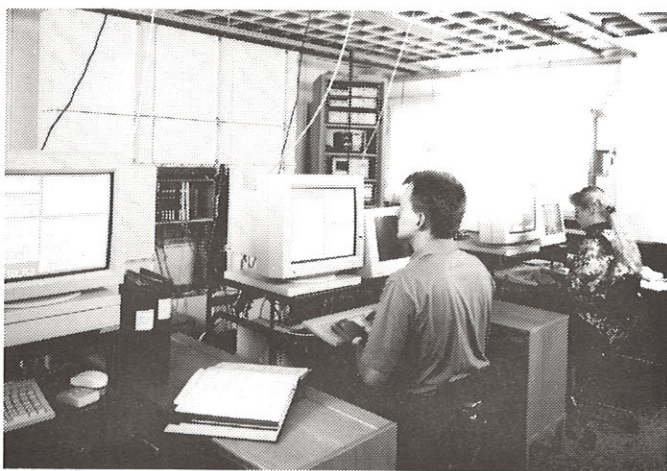
---

---

---

---

---



Nr: F209/3

**Integration Test**

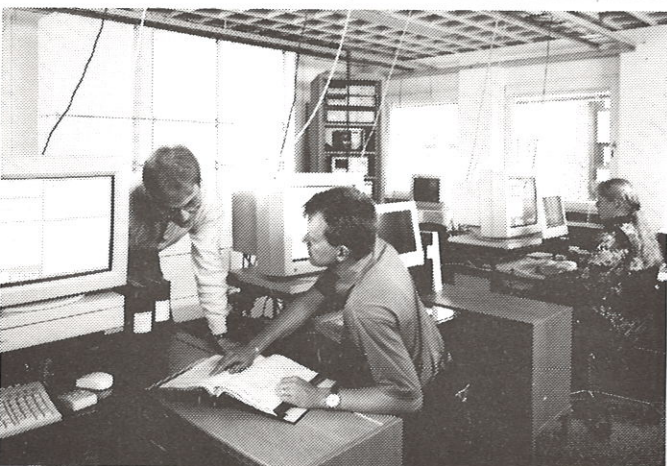
---

---

---

---

---



Nr: F209/4

**Integration Test**

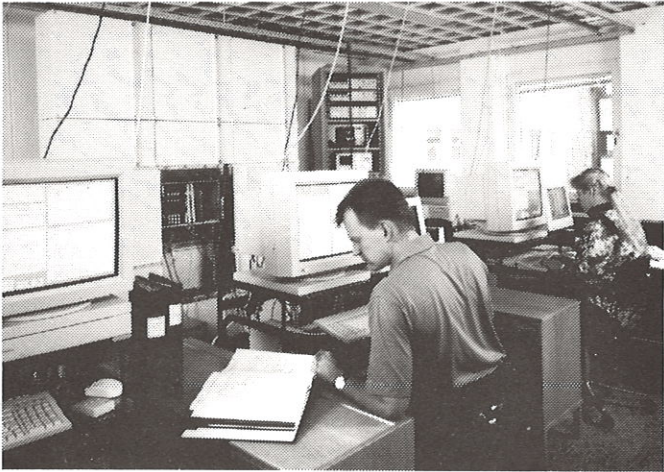
---

---

---

---

---



Nr: F209/5

**Integration Test**

---

---

---

---

---



Nr: F209/6

**Integration Test**

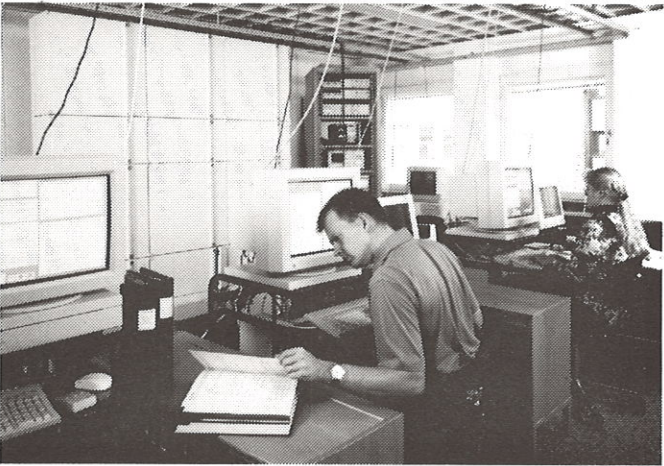
---

---

---

---

---



Nr: F209/7

**Integration Test**

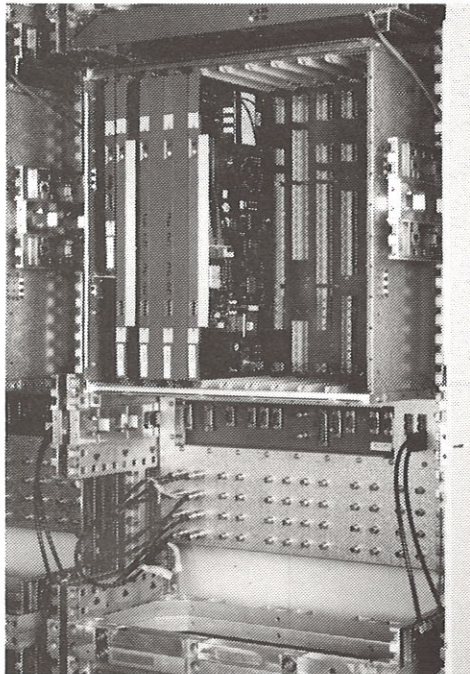
---

---

---

---

---



Nr: F209/8

**AXD 620 Terminal Multiplexer**

(OH: EN/LZD 109209/1 R1)

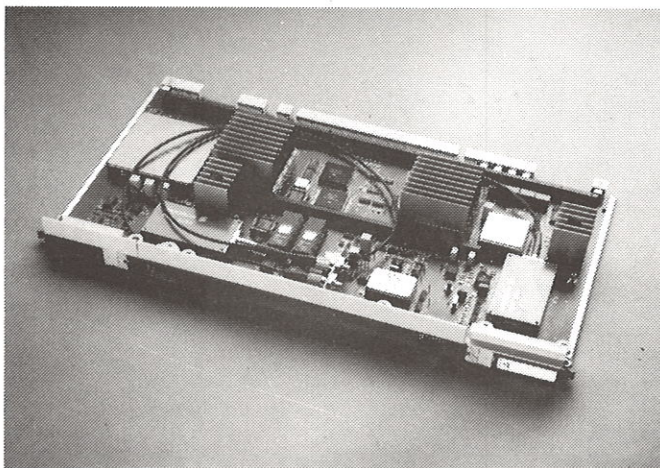
---

---

---

---

---



Nr: F209/9

**Terminating Access Unit**

(OH: EN/LZD 109209/2 R1)

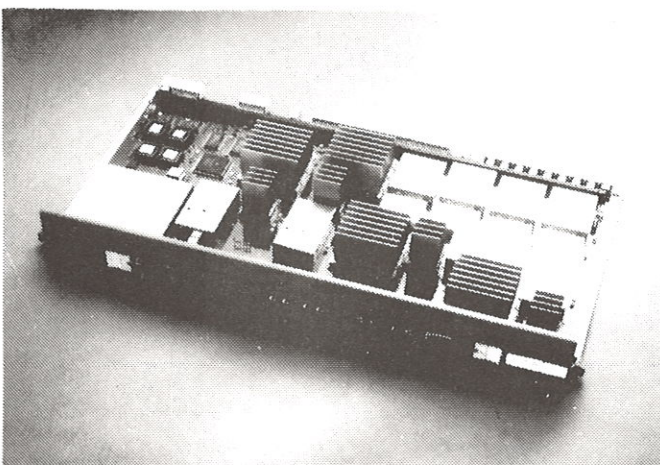
---

---

---

---

---



Nr: F209/10

**Terminating Access Unit**

**TAU 4x140**

(OH: EN/LZD 109209/3 R1)

---

---

---

---

---



Nr: F209/11

**AXD 155-620 Integration Test**

(OH: EN/LZD 109209/4 R1)

---

---

---

---

---



Nr: F209/12

**Integration Test**

---

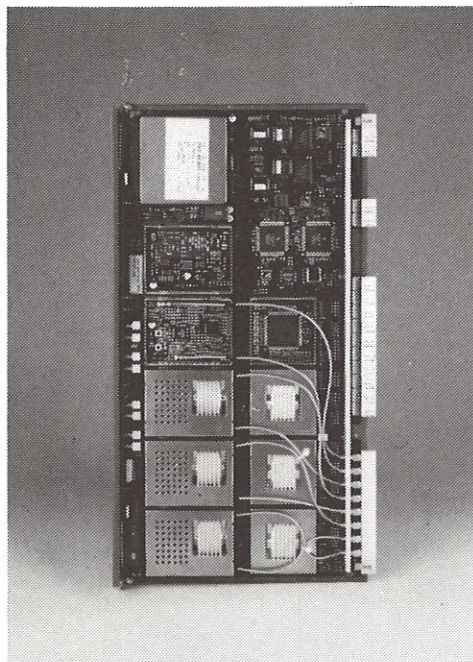
---

---

---

---





Nr: F210/1

### Terminating Access Unit

4xSTM-1e

(OH: EN/LZD 109210/1 R1)

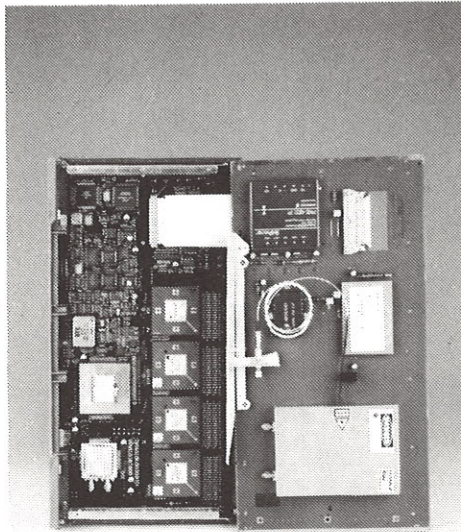
---

---

---

---

---



Nr: F210/2

**Optical Receive Unit**

**RXU STM-16**

(OH: EN/LZD 109210/2 R1)

---

---

---

---

---